

# Search Tool

User Manual for Win & Mac

---

Thank you very much for purchasing our company's products. Please feel free to contact us if you have any questions or needs.

#### **About this Instruction**

This manual is a general manual for the Search Tool. The support function differs depending on the release version. Please refer to the actual download tool.

This instruction is intended to be your reference tool when operating. Please fully understand the information of it before installation and use.

All pictures, images, icons and illustrations that instruction offers, just for explanation and illustration purposes, differences may exist between specific product and this instruction, please subject to the app version you download. Our company will update the contents of this instruction in accordance with the improvement of product features and will regularly improve and update products & Programs described in this manual. Please kindly know that updated content will be added in new version without notice.

#### **Responsibility Declaration**

- Under the greatest extent allowed by the laws, all products described in this instruction (includes hardware, software, firmware) are offered based on "current status", which may have flaw, mistake or malfunction, our company will not offer any kind of specific instruction or implied warranty, including but not limited to warranties of merchantability, quality satisfaction, fitness for a particular purpose, non-infringement of third party rights; Nor offer any compensation for special, incidental or indirect damages resulting from the use of this manual or our company's product, including but not limited to loss of business profits, loss of data or documentation.
- Customer itself should undertake risks if he/she access product to internet, including but not limited to network attack, hacking, virus infection, etc. Any issues that result from it, includes product's abnormal operation, information disclosure etc, our company will not responsible for it but we will offer you timely technical support.
- When using this product, please strictly follow the applicable law. If the product is used for infringement of third party rights or other improper use, the Company shall not be liable.
- If the contents of this manual conflict with applicable law, the law shall be subject to.

---

## Table of Contents

Chapter 1 Search Tool Instruction .....	4
1.1 Instruction .....	4
1.2 Application Environment .....	4
1.4 Installation .....	4
1.4.1 Windows System Installation .....	4
1.4.2 Mac System Installation .....	4
Chapter 2 Introduction to the main interface .....	5
2.1 Introduction to the main interface .....	5
2.2 Top left toolbar .....	5
2.3 Device information display .....	7
2.4 Edit bar .....	7
2.5 Top right toolbar .....	8
Chapter 3 Use of Search tool .....	9
3.1 Equipment sorting.....	9
3.1.1 Ascending.....	9
3.1.2 Descending order .....	9
3.2 Using the Software.....	10
3.2.1 Device search .....	10
3.2.2 Quick access .....	10
3.2.3 Modifying Network Parameters.....	11
3.2.4 Batch modify device parameters .....	12
3.2.5 Batch modify device password .....	14
3.2.6 Equipment upgrade.....	16
3.2.7 Forget password.....	17
3.2.7 Reset IPC .....	18

---

## Chapter 1 Search Tool Instruction

### 1.1 Instruction

Search Tool is a tool for searching online devices (webcams, network video recorders, hybrid video recorders, etc.). The software can search all on-line devices of our company and all on-line devices of Onvif common network segment in the same LAN; display the device's model, name, IP address, gateway, port, channel and other related information. The Search Tool can also be used to modify individual devices or to modify network parameters for multiple devices at the same time, upgrade individual devices, and bulk modify the device password for the device user name admin.

### 1.2 Application Environment

Search Tool is divided into Windows version and Mac version. When using, please install the corresponding computer system Search Tool. This manual is for the Search Tool for Windows and Mac.

### 1.3 Conventions

In order to simplify the description in this manual, the following conventions are made:


1. The device network search software is referred to as software.
2. Click to left-click; double-click to double-click the mouse; right-click to right-click.

### 1.4 Installation

#### 1.4.1 Windows System Installation

##### ■ Download

Log in to "www.herospeed.net", select "Tools", click "READ MORE" → select Search Tool

(Windows), click "  " to download the Search Tool software to the local PC.

##### ■ Installation

Double-click the download file "SearchTool\_setupx.2.xx.x.exe" → select the language → follow the prompts to complete the installation. After the installation is successful, the desktop prompts the icon shown in Figure 1-1:

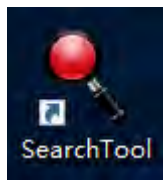



Figure 1-1

#### 1.4.2 Mac System Installation

##### ■ Download

Log in to "www.herospeed.net", select "Tools", click "READ MORE" → select Search Tool (Mac),

click "  " to download the Search Tool software to the local PC.

## ■ Installation

Double-click SearchTool for Mac x.2.xx.x.zip → double-click SearchTool for Mac x.2.xx.x.dmg → double-click SearchTool for Mac Setup.pkg and follow the prompts to install. After successful installation, the Launchpad prompts as shown in Figure 1-2:

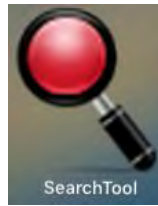


Figure 1-2

## Chapter 2 Introduction to the main interface

### 2.1 Introduction to the main interface

Double-click the “Search Tool” icon on the Windows desktop or Mac Launchpad interface to run the Search Tool and enter the main software interface. The main interface can be divided into the following four parts as shown in Figure 2-1:

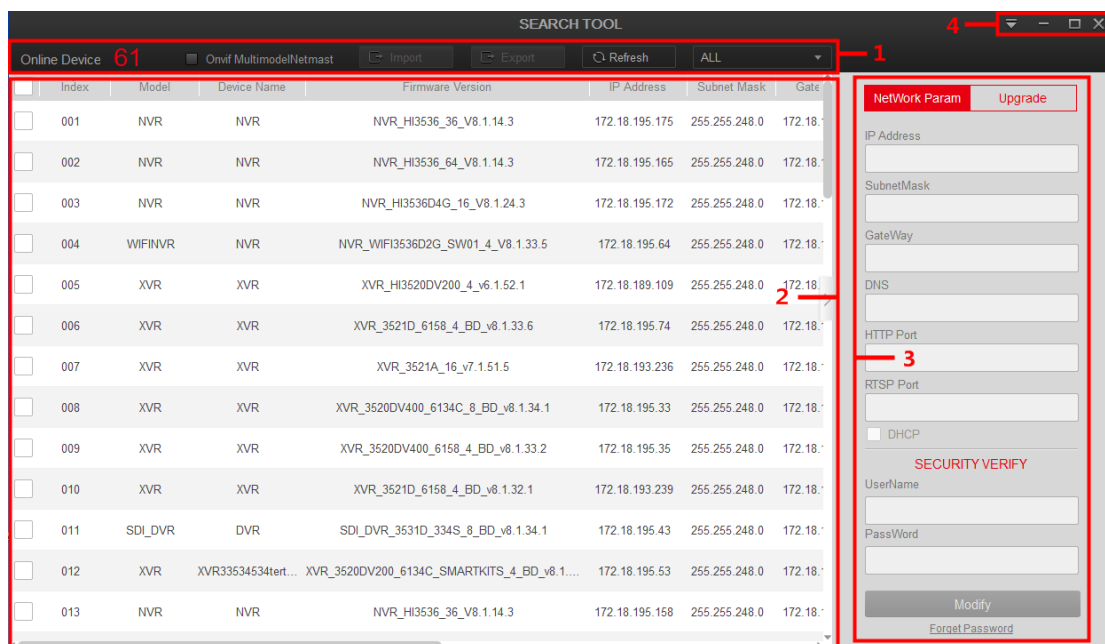


Figure 2-1

### 2.2 Top left toolbar

The upper toolbar, as shown in Figure 2-1, above, is composed of Online Device, Onvif Multimode Netmast, Import, Export, Refresh, and device types:

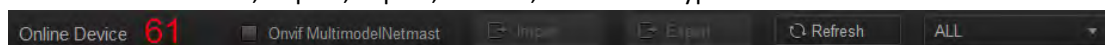


Figure 2-2

The functions of the buttons on the upper toolbar are shown in Table 2-1.

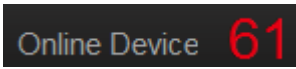
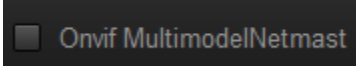
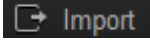

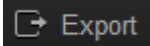

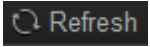
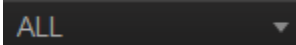
Button	Description
	Displays the number of network devices that have been searched online in the current mode.
	Click to enable the Onvif multi-segment function. During the search, you can search for the following network segment devices: {"192.0.0.5", "255.255.255.0", "", 1}, {"192.168.0.5", "255.255.255.0", "", 2}, {"192.168.1.5", "255.255.255.0", "", 3}, {"192.168.2.5", "255.255.255.0", "", 4}, {"192.168.88.5", "255.255.255.0", "", 5}
	Import device parameter configuration: check device → click "Import" → click "  " to enter the path to select the file to import → enter the device "User Name", "PassWord" → click "Import"
	Local Export: Export device related information Check the device → click "Export" → Local Export position, enter the File Name → select the path → click "Export" → click "Confirm" Remote Export: Export device parameter configuration Check the device → click "Export" → Remote Export position, click "  " to set the export file storage path → enter the device Username and Password → click "Export" → click "Confirm"
	Click Search again to refresh the device and refresh the interface.
	Click to select search device type, divided into "ALL", "IPC", "NVR/XVR/HVR/DVR", "ONVIF", "OTHER"

Table 2-1



**Instruction**

- When importing parameter configurations, you can select multiple devices with the same firmware version at the same time. Currently only IPC supports remote import and remote export.
- Local export can select multiple devices of the same type at the same time, click "Export", set the file name, path, export, and export related information of these devices.
- Remote export can select multiple devices of the same type at the same time, click "Export", set the path, enter the device user name and password, click "Export", and export the configuration parameters of these devices.

## 2.3 Device information display

The device information display column at the bottom left shows the Model, Device name, Firmware Version, IP Address, Subnet Mask, GateWay, DNS, MAC, HTTP Port, RTSP Port, Channels, DHCP Enable, and Type, as shown in Figure 2-3.

<input type="checkbox"/>	Index	Model	Device Name	Firmware Version	IP Address	Subnet Mask	GateWay	DNS	MAC	HTTP Port	RTSP Port	Channels	DHCP Enable	Type
<input type="checkbox"/>	001	XVR	XVR	XVR_3521D_6134C_16_v8.1.17.4	172.18.193.226	255.255.248.0	172.18.192.2	202.96.134.133	16:23:5A:FF:E5:1E	80	554	16	Close	1000
<input type="checkbox"/>	002	NVR	NVR	NVR_H3536_36_V8.1.14.3	172.18.194.25	255.255.248.0	172.18.192.2	192.168.0.1	18:01:0C:0D:1D:4A	80	554	36	Close	700
<input type="checkbox"/>	003	NVR	NVR	NVR_H35360_9_V7.1.50.4	192.168.1.87	255.255.255.0	192.168.1.1	192.168.1.1	1A:1D:1F:38:65:FD	80	554	9	Close	700
<input type="checkbox"/>	004	NVR	NVR	NVR_H35360_9_V8.1.11.5	172.18.193.223	255.255.248.0	172.18.192.2	172.18.192.2	1A:1D:1F:38:65:F6	80	554	9	Close	700
<input type="checkbox"/>	005	XVR	XVR	XVR_3531D_6158_16_v8.1.17.4	172.18.195.135	255.255.248.0	172.18.192.2	202.96.134.133	F2:28:97:C0:DC:F3	80	554	32	Close	1000
<input type="checkbox"/>	006	XVR	XVR	XVR_3521D_6134C_16_v8.1.16.2	172.18.195.123	255.255.248.0	172.18.192.2	202.96.134.133	32:DD:93:7A:42:A8	80	554	16	Close	1000
<input type="checkbox"/>	007	XVR	XVR	XVR_3521A_2826_4_v8.1.14.1	172.18.196.119	255.255.248.0	172.18.192.2	202.96.134.133	D2:CF:93:42:CB:5C	80	554	16	Close	1000
<input type="checkbox"/>	008	WIFINVR	NVR	NVR_WIF353602G_HW01_9_...	172.20.18.78	255.255.255.0	172.20.18.1	172.20.18.1	2E:62:22:66:92:A9	80	554	9	Close	700
<input type="checkbox"/>	009	NVR	NVR	NVR_H35360_9_V8.1.15.2	172.18.197.211	255.255.248.0	172.18.192.2	192.168.1.1	00:01:1C:19:16:8E	80	554	9	Close	700
<input type="checkbox"/>	010	XVR	XV+R	XVR_3531A_2826_8_v8.1.6.2	172.18.193.236	255.255.248.0	172.18.192.2	172.18.192.2	26:E0:4B:B5:D2:BC	80	554	32	Close	1000
<input type="checkbox"/>	011	NVR	NVR	NVR_H35360_9_V8.1.17.5	172.18.197.212	255.255.248.0	172.18.192.2	172.18.192.2	1A:1D:20:39:6D:82	80	554	9	Close	700
<input type="checkbox"/>	012	IPCAMERA	IPC	3516D_OV4689_W_SD_S_CD_...	172.18.196.51	255.255.248.0	172.18.192.2	172.18.192.2	FE:21:05:89:A4:11	80	554	0	Close	500
<input type="checkbox"/>	013	IPCAMERA	IPC	3516D_OV4689_W_BOX_7.1.4...	172.18.198.212	255.255.248.0	172.18.192.2	172.18.192.2	00:00:1B:00:00:00	80	554	0	Close	500
<input type="checkbox"/>	014	XVR	XVR	XVR_3521A_2826_4_v8.1.17.3	172.18.196.110	255.255.248.0	172.18.192.2	172.18.192.2	00:00:1C:14:B8:8F	80	554	16	Close	1000
<input type="checkbox"/>	015	IPCAMERA	IPC	FH8830_AR0330_FISHEYE_...	172.18.197.65	255.255.248.0	172.18.192.2	172.18.192.2	7E:AF:1A:F4:09:FD	80	554	0	Close	500
<input type="checkbox"/>	016	IPCAMERA	IPC	3516CV300_IMX323_B1T1A1M...	172.18.198.208	255.255.248.0	172.18.192.2	172.18.192.2	EE:82:0F:09:AF:54	80	554	0	Close	500

Figure 2-3

## 2.4 Edit bar

The edit bar consists of network parameter settings, upgrades, and batch processing passwords, as shown in Figure 2-4.

Figure 2-4



**Instruction**

- When selecting multiple products of the same type, the interface displays the batch processing password.

## 2.5 Top right toolbar

The upper right toolbar consists of a drop-down box, minimize, maximize, and close buttons, as shown in Figure 2-5 below:



Figure 2-5

The function of each button in the toolbar above the search tool is shown in Table 2-2.

Button	Description
	Drop-down box, including search tool language (中文, English) switch and about us (version, copyright)
	Minimize
	Maximize
	Close

Table 2-2



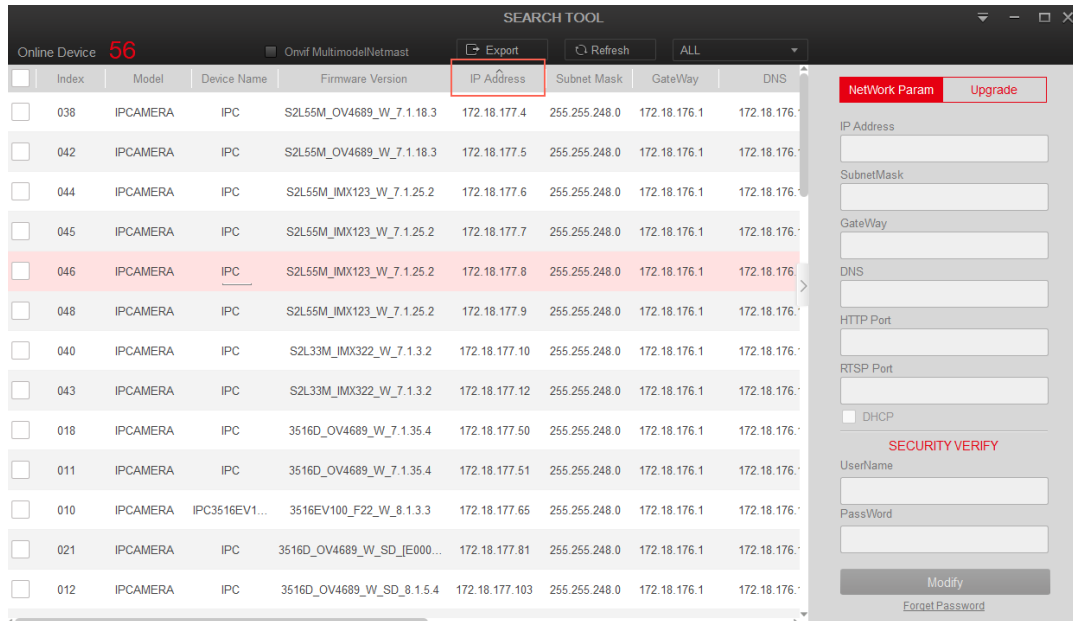
## Chapter 3 Use of Search tool

### 3.1 Equipment sorting

The online device list can be sorted in ascending or descending order according to the parameter items selected in the header line.

#### 3.1.1 Ascending

Click on any of the parameter items in the header row, as shown in Figure 3-1, “IP Address”, which is sorted in ascending order by device IP.



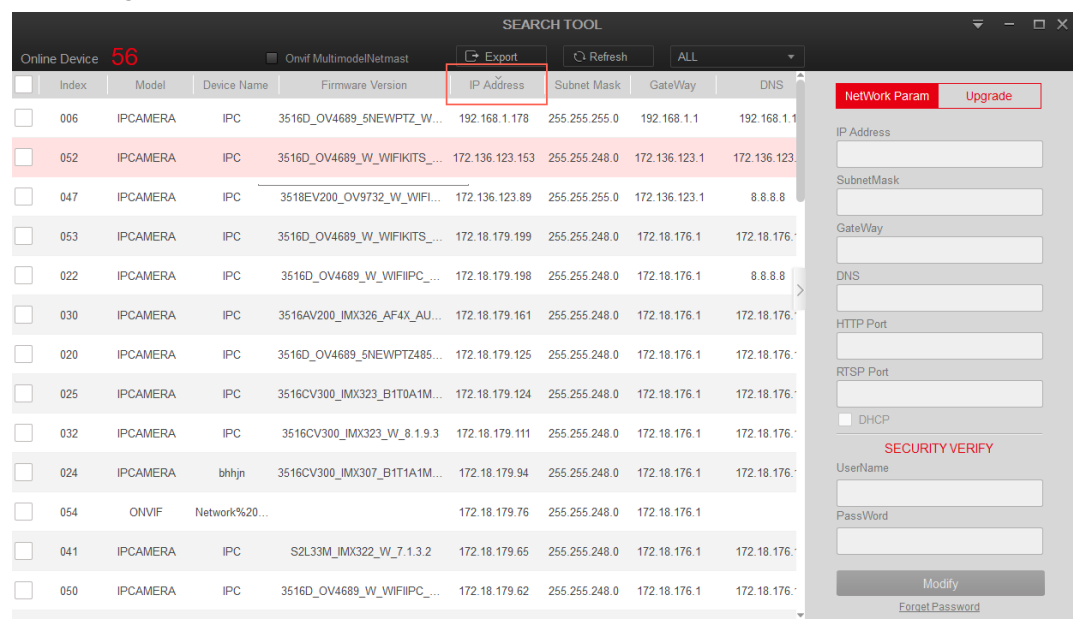
The screenshot shows the 'SEARCH TOOL' interface with 56 online devices. The table columns are: Index, Model, Device Name, Firmware Version, IP Address, Subnet Mask, GateWay, and DNS. The 'IP Address' column is highlighted with a red box. The devices are sorted in ascending order by IP address. A sidebar on the right contains network parameters and a security verification section.

Index	Model	Device Name	Firmware Version	IP Address	Subnet Mask	GateWay	DNS
038	IPCAMERA	IPC	S2L55M_OV4689_W_7.1.18.3	172.18.177.4	255.255.248.0	172.18.176.1	172.18.176.1
042	IPCAMERA	IPC	S2L55M_OV4689_W_7.1.18.3	172.18.177.5	255.255.248.0	172.18.176.1	172.18.176.1
044	IPCAMERA	IPC	S2L55M_IMX123_W_7.1.25.2	172.18.177.6	255.255.248.0	172.18.176.1	172.18.176.1
045	IPCAMERA	IPC	S2L55M_IMX123_W_7.1.25.2	172.18.177.7	255.255.248.0	172.18.176.1	172.18.176.1
046	IPCAMERA	IPC	S2L55M_IMX123_W_7.1.25.2	172.18.177.8	255.255.248.0	172.18.176.1	172.18.176.1
048	IPCAMERA	IPC	S2L55M_IMX123_W_7.1.25.2	172.18.177.9	255.255.248.0	172.18.176.1	172.18.176.1
040	IPCAMERA	IPC	S2L33M_IMX322_W_7.1.3.2	172.18.177.10	255.255.248.0	172.18.176.1	172.18.176.1
043	IPCAMERA	IPC	S2L33M_IMX322_W_7.1.3.2	172.18.177.12	255.255.248.0	172.18.176.1	172.18.176.1
018	IPCAMERA	IPC	3516D_OV4689_W_7.1.35.4	172.18.177.50	255.255.248.0	172.18.176.1	172.18.176.1
011	IPCAMERA	IPC	3516D_OV4689_W_7.1.35.4	172.18.177.51	255.255.248.0	172.18.176.1	172.18.176.1
010	IPCAMERA	IPC3516EV1...	3516EV100_F22_W_8.1.3.3	172.18.177.65	255.255.248.0	172.18.176.1	172.18.176.1
021	IPCAMERA	IPC	3516D_OV4689_W_SD_JE000...	172.18.177.81	255.255.248.0	172.18.176.1	172.18.176.1
012	IPCAMERA	IPC	3516D_OV4689_W_SD_8.1.5.4	172.18.177.103	255.255.248.0	172.18.176.1	172.18.176.1

Figure 3-1

#### 3.1.2 Descending order

Click the parameter item “IP address” again, as shown in Figure 3-2, that is, sort by device IP in descending order.



The screenshot shows the 'SEARCH TOOL' interface with 56 online devices. The table columns are: Index, Model, Device Name, Firmware Version, IP Address, Subnet Mask, GateWay, and DNS. The 'IP Address' column is highlighted with a red box. The devices are sorted in descending order by IP address. A sidebar on the right contains network parameters and a security verification section.

Index	Model	Device Name	Firmware Version	IP Address	Subnet Mask	GateWay	DNS
006	IPCAMERA	IPC	3516D_OV4689_5NEWPTZ_W...	192.168.1.178	255.255.255.0	192.168.1.1	192.168.1.1
052	IPCAMERA	IPC	3516D_OV4689_W_WIFIKITS_...	172.136.123.153	255.255.248.0	172.136.123.1	172.136.123.1
047	IPCAMERA	IPC	3518EV200_OV9732_W_WIFL...	172.136.123.89	255.255.255.0	172.136.123.1	8.8.8.8
053	IPCAMERA	IPC	3516D_OV4689_W_WIFIKITS_...	172.18.179.199	255.255.248.0	172.18.176.1	172.18.176.1
022	IPCAMERA	IPC	3516D_OV4689_W_WIFIPC_...	172.18.179.198	255.255.248.0	172.18.176.1	8.8.8.8
030	IPCAMERA	IPC	3516AV200_IMX326_AF4X_AU...	172.18.179.161	255.255.248.0	172.18.176.1	172.18.176.1
020	IPCAMERA	IPC	3516D_OV4689_5NEWPTZ485...	172.18.179.125	255.255.248.0	172.18.176.1	172.18.176.1
025	IPCAMERA	IPC	3516CV300_IMX323_B1T0A1M...	172.18.179.124	255.255.248.0	172.18.176.1	172.18.176.1
032	IPCAMERA	IPC	3516CV300_IMX323_W_8.1.9.3	172.18.179.111	255.255.248.0	172.18.176.1	172.18.176.1
024	IPCAMERA	bhjn	3516CV300_IMX307_B1T1A1M...	172.18.179.94	255.255.248.0	172.18.176.1	172.18.176.1
054	ONVIF	Network%20...		172.18.179.76	255.255.248.0	172.18.176.1	
041	IPCAMERA	IPC	S2L33M_IMX322_W_7.1.3.2	172.18.179.65	255.255.248.0	172.18.176.1	172.18.176.1
050	IPCAMERA	IPC	3516D_OV4689_W_WIFIPC_...	172.18.179.62	255.255.248.0	172.18.176.1	172.18.176.1

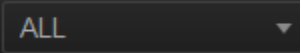
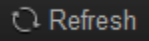
Figure 3-2

## 3.2 Using the Software

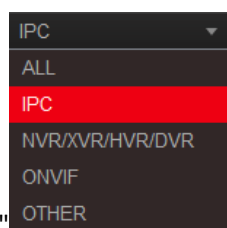
### 3.2.1 Device search

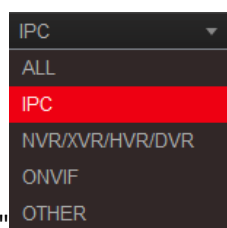
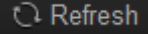
After the Search Tool software starts, it automatically searches for online devices on the LAN where the computer is located. The main interface displays all online device-related parameters such as device type, device name, firmware version, IP address, subnet mask, gateway, DNS, physical address, HTTP port, RTSP port, channel, DHCP, type, and other information.

#### ■ Search all devices

Select "  " and click the "  " button to search for all online devices on the LAN where the computer is located.

#### ■ Search for a device of the specified type



Select the option "  " for "IPC" and click the "  " button to search for all online IPC devices on the LAN where the computer resides.

The detailed descriptions of the device type buttons are shown in Table 3-1.

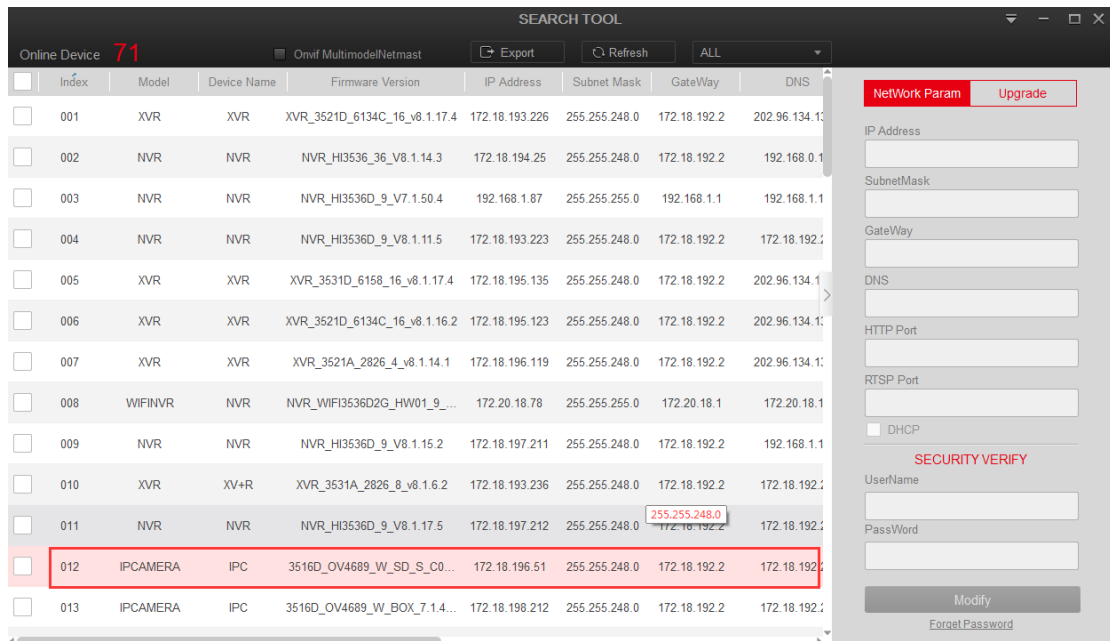
Button	Description
ALL	All, all our equipment and devices that support ONVIF search, in the search tool device types all types include IPCAMERA/NVR/XVR/HVR/DVR/ONVIF
IPC	Network Camera, the type of equipment in the search tool is IPCAMERA.
NVR/XVR/HVR/DVR	Network video recorder, in the search tool, the device type is NVR/XVR/HVR/DVR.
ONVIF	Devices that support ONVIF, the device type is ONVIF in the search tool.
OTHER	Customized equipment.

Table 3-1

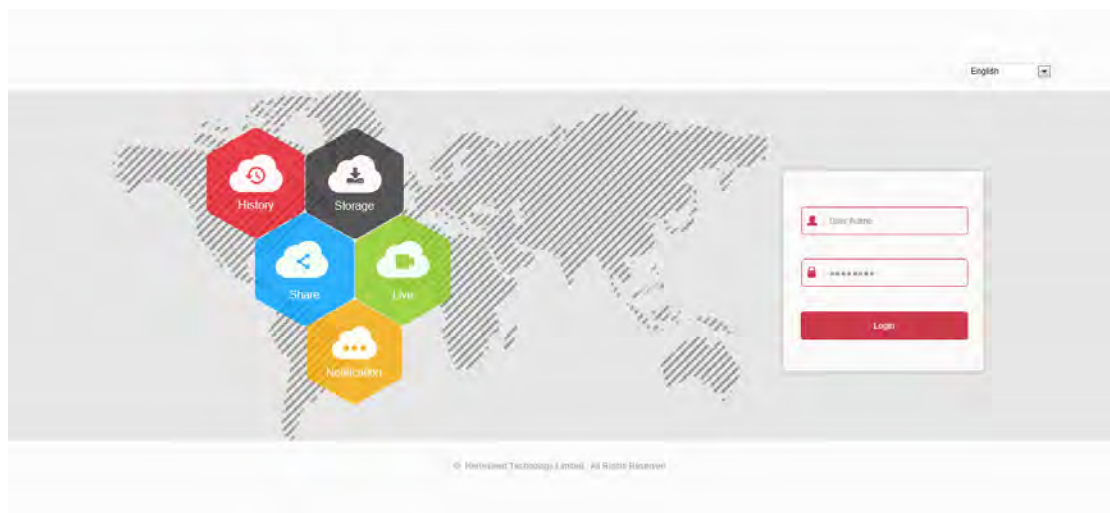
### 3.2.2 Quick access

Quick access, as shown in Figure 3-3.

- ① Double-click on the information bar of any device;
- ② The browser opens automatically and accesses this device.



①



②

Figure 3-3

### 3.2.3 Modifying Network Parameters

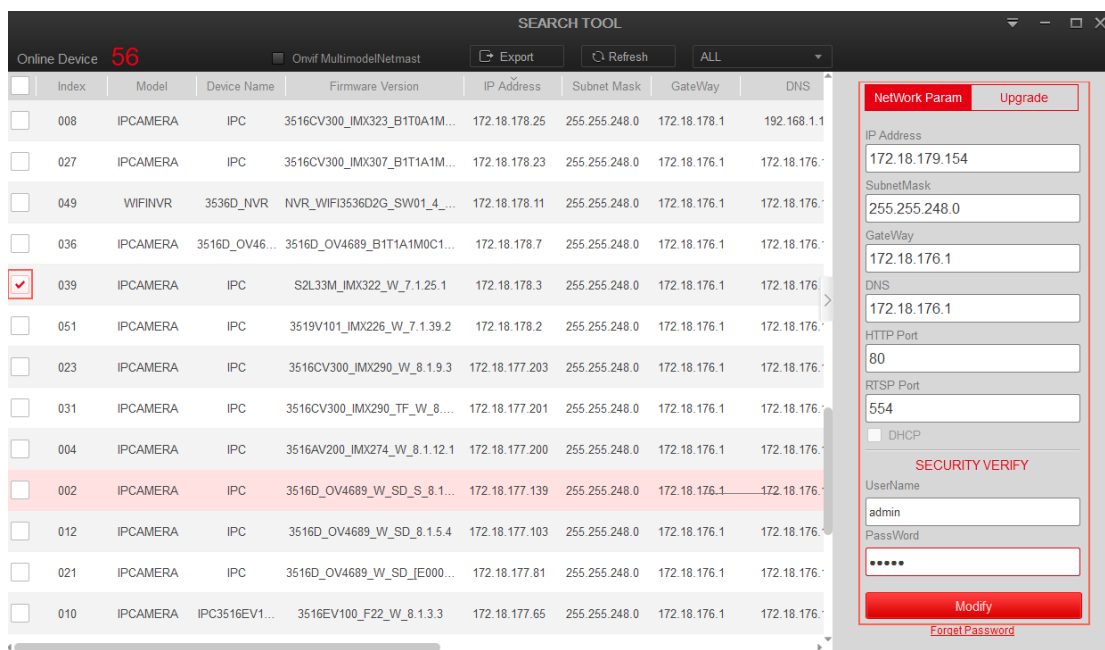
#### ■ Modify 1 device network parameter

Modify the network parameters of a device as shown in Figure 3-4.

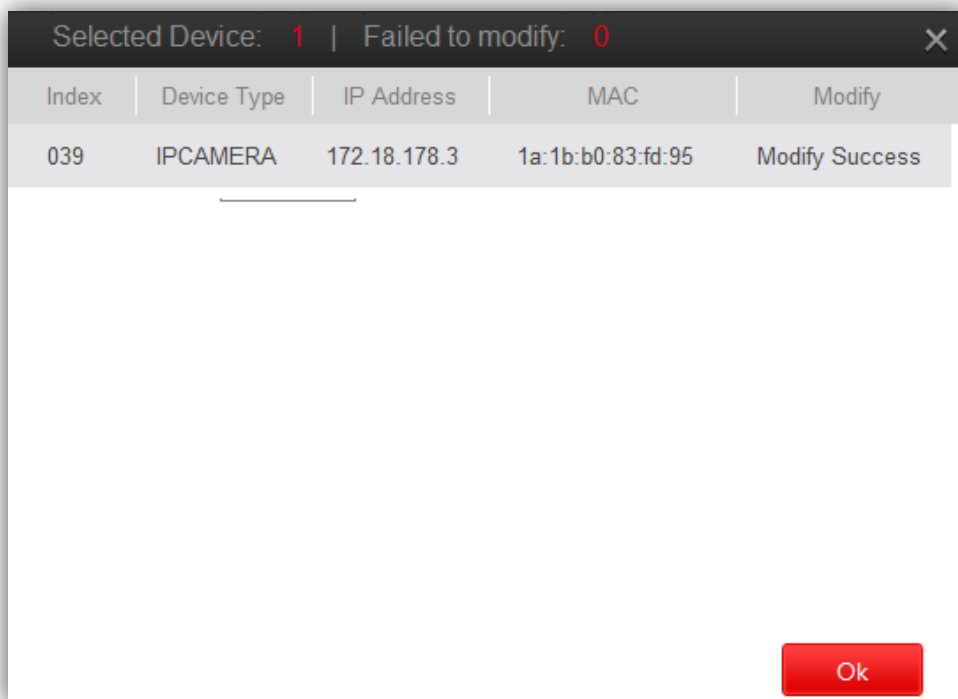
① Check the device to be modified. On the Network Parameters screen, edit the network parameters that need to be changed, such as IP address, HTTP port, subnet mask, and gateway, and select Use DHCP (if this item is enabled, the device will enable automatic IP address acquisition). Enter the device password and click "Modify";

② If the modification is successful, click the "Ok" or "X" button to close the

confirmation list and return to the main interface.



①



②

Figure 3-4

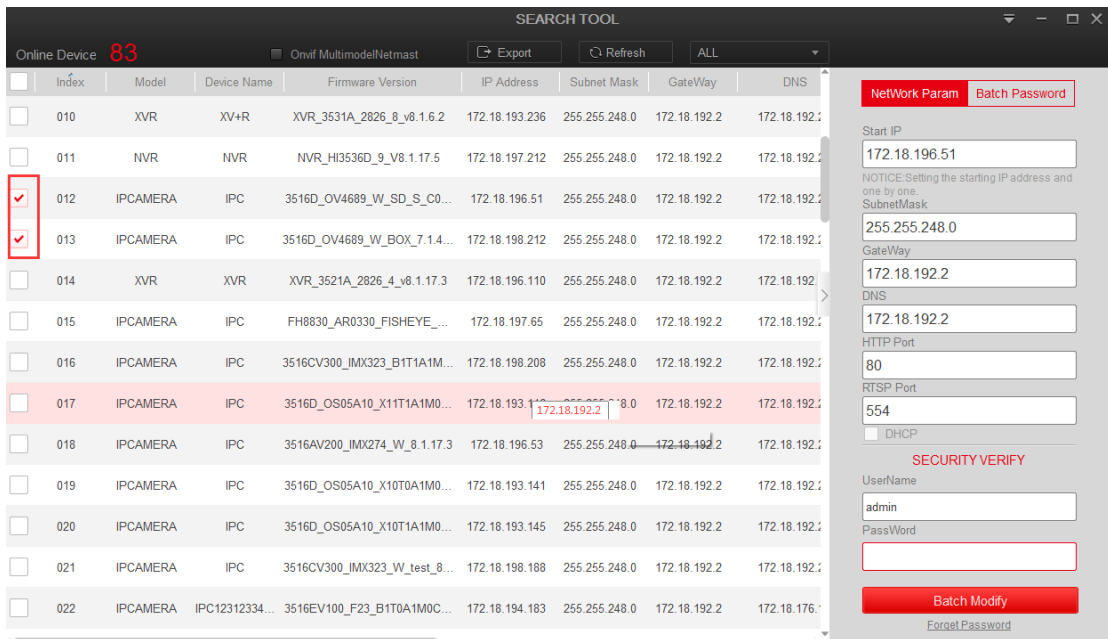
### 3.2.4 Batch modify device parameters

Modify the network parameters of multiple devices as shown in Figure 3-5.

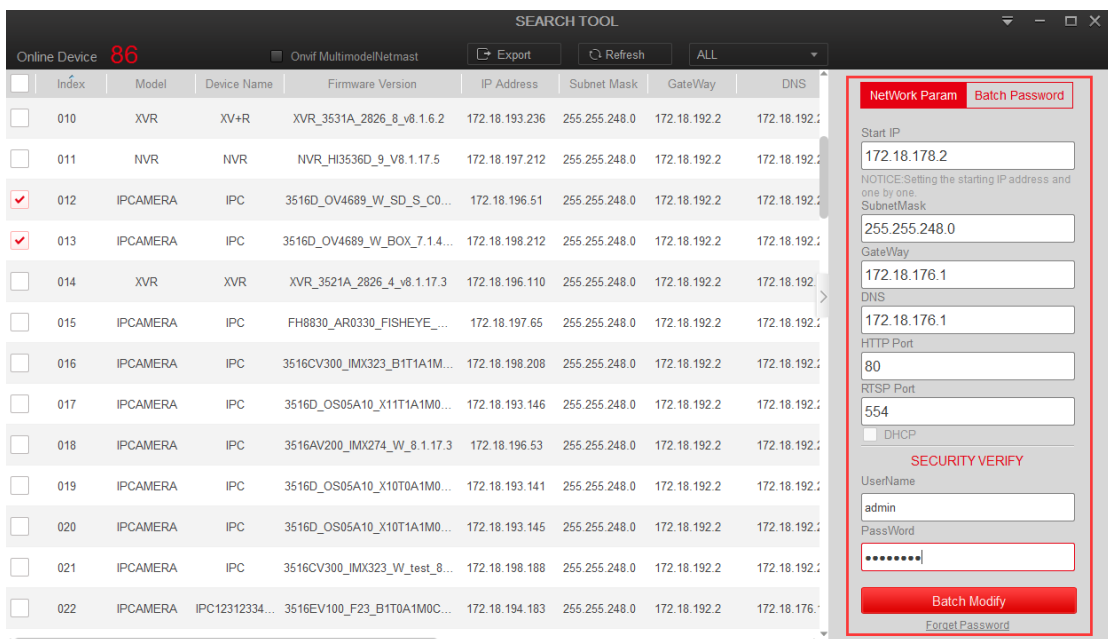
- ① Check multiple devices or all devices that need to modify network parameters;

② Enter the starting IP, Subnet Mask, GateWay, DNS, HTTP Port, RTSP Port, and select Use DHCP (if this item is enabled, the device will enable automatic IP address acquisition). Enter the device password, and click the " **Batch Modify** " button.

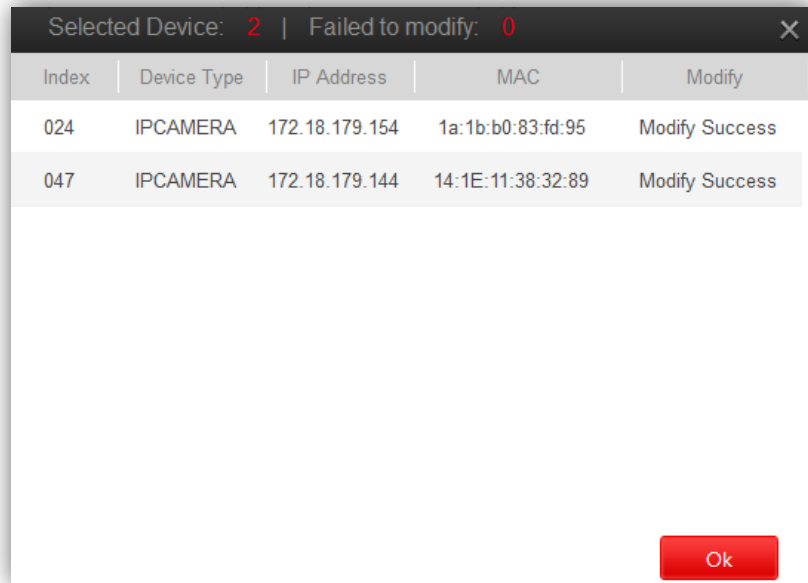
③ After the modification, a confirmation list pops up to display the batch modification device number, the number of modification failures, the number of each modification device, device type, IP address, MAC address, and modification. Click the " **Ok** " or " **X** " button to close the Prompt, return to the main interface.



①



②



Index	Device Type	IP Address	MAC	Modify
024	IPCAMERA	172.18.179.154	1a:1b:b0:83:fd:95	Modify Success
047	IPCAMERA	172.18.179.144	14:1E:11:38:32:89	Modify Success

Ok

③

Figure 3-5



#### Instruction

- When using the batch configuration function, the account and password of the device must be the same.
- When batch modification, all selected devices must belong to the same type, such as all IPC (or both are NVR/HVR, ONVIF, OTHER).
- The interface will be locked when batch editing, please wait patiently.

### 3.2.5 Batch modify device password

The software batch modify the device password as shown in Figure 3-6.

- ① Batch check to modify the device, click "**Batch Password**" button; enter the new password and the current password, click "**Modify**";
- ② After the modification, a confirmation list pops up and click "**Ok**".

SEARCH TOOL

Online Device: 51

Onvif MultimodelNetmast

Export Refresh IPC

Index	Model	Device Name	Firmware Version	IP Address	Subnet Mask	GateWay	DNS
<input type="checkbox"/>	020	IPCAMERA	IPC	3516CV300_IMX290_TF_W_8...	172.18.172.255.255.248.0	172.18.176.1	172.18.176.1
<input type="checkbox"/>	034	IPCAMERA	IPC	3516CV300_IMX290_W_8.1.9.3	172.18.177.203	255.255.248.0	172.18.176.1
<input checked="" type="checkbox"/>	038	IPCAMERA	IPC	S2L33M_IMX322_W_7.1.25.1	172.18.178.2	255.255.248.0	172.18.176.1
<input checked="" type="checkbox"/>	051	IPCAMERA	IPC	3519V101_IMX226_W_7.1.39.2	172.18.178.3	255.255.248.0	172.18.176.1
<input type="checkbox"/>	021	IPCAMERA	3516D_OV46...	3516D_OV4689_B1T1A1M0C1...	172.18.178.7	255.255.248.0	172.18.176.1
<input type="checkbox"/>	033	IPCAMERA	IPC	3516CV300_IMX307_B1T1A1M...	172.18.178.23	255.255.248.0	172.18.176.1
<input type="checkbox"/>	030	IPCAMERA	IPC	3516CV300_IMX290_TF_W_8...	172.18.178.29	255.255.248.0	172.18.176.1
<input type="checkbox"/>	029	IPCAMERA	IPC	3516CV300_IMX290_MINI_W_...	172.18.178.38	255.255.248.0	172.18.176.1
<input type="checkbox"/>	005	IPCAMERA	IPC	3516D_OS05A10_B1T1A1M0C...	172.18.178.52	255.255.248.0	172.18.176.1
<input type="checkbox"/>	024	IPCAMERA	IPC	3516AV200_IMX326_AF4X_AU...	172.18.178.57	255.255.248.0	172.18.176.1
<input type="checkbox"/>	006	IPCAMERA	IPChj	3516D_OV4689_W_SD_S_C0...	172.18.178.62	255.255.248.0	172.18.176.1
<input type="checkbox"/>	018	IPCAMERA	IPC	3516CV300_IMX290_TF_W_8...	172.18.178.63	255.255.248.0	172.18.176.1
<input type="checkbox"/>	027	IPCAMERA	IPC	3516CV300_IMX290_W_8.1.9.3	172.18.178.65	255.255.248.0	172.18.176.1

NetWork Param Batch Password

New Password

SECURITY VERIFY

UserName: admin

PassWord

Modify

①

Selected Device: 2 | Failed to modify: 0

Index	Device Type	IP Address	MAC	Modify
038	IPCAMERA	172.18.178.2	1a:1b:b0:83:fd:95	Modify Success
051	IPCAMERA	172.18.178.3	14:1E:11:38:32:89	Modify Success

Ok

②

Figure 3-6



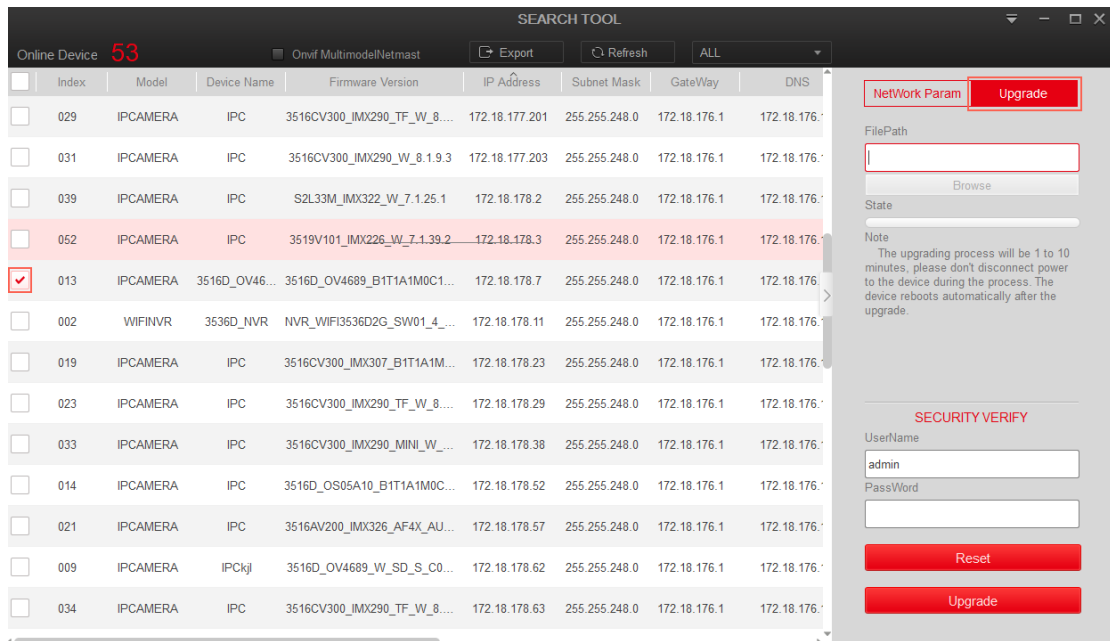
**Instruction**

- When using the batch configuration function, the account and password of the device must be the same.
- When batch modification, all selected devices must belong to the same type, such as all IPC (or both are NVR/HVR, ONVIF, OTHER).
- The interface will be locked when batch editing, please wait patiently.

### 3.2.6 Equipment upgrade

The device upgrade is as shown in Figure 3-7.

- ① Select a device and click the "Upgrade" button to enter the corresponding interface;
- ② Click "Browse" to select the upgrade package, enter the user name and password, and click the Upgrade button to upgrade the device.



SEARCH TOOL

Online Device: 53

Index	Model	Device Name	Firmware Version	IP Address	Subnet Mask	GateWay	DNS
029	IPCAMERA	IPC	3516CV300_IMX290_TF_W_8...	172.18.177.201	255.255.248.0	172.18.176.1	172.18.176.1
031	IPCAMERA	IPC	3516CV300_IMX290_W_8.1.9.3	172.18.177.203	255.255.248.0	172.18.176.1	172.18.176.1
039	IPCAMERA	IPC	S2L33M_IMX322_W_7.1.25.1	172.18.178.2	255.255.248.0	172.18.176.1	172.18.176.1
052	IPCAMERA	IPC	3519V101_IMX226_W_7.1.39.2	172.18.178.3	255.255.248.0	172.18.176.1	172.18.176.1
013	IPCAMERA	3516D_OV46...	3516D_OV4689_B1T1A1M0C1...	172.18.178.7	255.255.248.0	172.18.176.1	172.18.176.1
002	WIFINVR	3536D_NVR	NVR_WIFI3536D2G_SW01_4...	172.18.178.11	255.255.248.0	172.18.176.1	172.18.176.1
019	IPCAMERA	IPC	3516CV300_IMX307_B1T1A1M...	172.18.178.23	255.255.248.0	172.18.176.1	172.18.176.1
023	IPCAMERA	IPC	3516CV300_IMX290_TF_W_8...	172.18.178.29	255.255.248.0	172.18.176.1	172.18.176.1
033	IPCAMERA	IPC	3516CV300_IMX290_MINI_W...	172.18.178.38	255.255.248.0	172.18.176.1	172.18.176.1
014	IPCAMERA	IPC	3516D_OS05A10_B1T1A1M0C...	172.18.178.52	255.255.248.0	172.18.176.1	172.18.176.1
021	IPCAMERA	IPC	3516AV200_IMX326_AF4X_AU...	172.18.178.57	255.255.248.0	172.18.176.1	172.18.176.1
009	IPCAMERA	IPCKjl	3516D_OV4689_W_SD_S_C0...	172.18.178.62	255.255.248.0	172.18.176.1	172.18.176.1
034	IPCAMERA	IPC	3516CV300_IMX290_TF_W_8...	172.18.178.63	255.255.248.0	172.18.176.1	172.18.176.1

NetWork Param Upgrade

FilePath

Browse

State

Note

The upgrading process will be 1 to 10 minutes, please don't disconnect power to the device during the process. The device reboots automatically after the upgrade.

SECURITY VERIFY

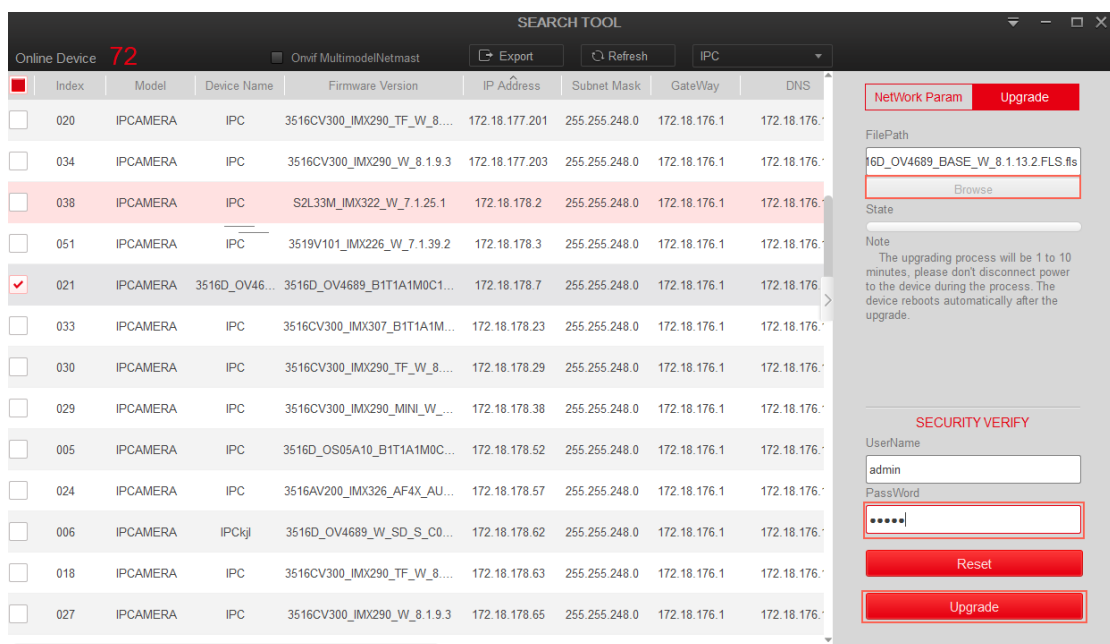
UserName: admin

Password: [redacted]

Reset

Upgrade

①



SEARCH TOOL

Online Device: 72

Index	Model	Device Name	Firmware Version	IP Address	Subnet Mask	GateWay	DNS
020	IPCAMERA	IPC	3516CV300_IMX290_TF_W_8...	172.18.177.201	255.255.248.0	172.18.176.1	172.18.176.1
034	IPCAMERA	IPC	3516CV300_IMX290_W_8.1.9.3	172.18.177.203	255.255.248.0	172.18.176.1	172.18.176.1
038	IPCAMERA	IPC	S2L33M_IMX322_W_7.1.25.1	172.18.178.2	255.255.248.0	172.18.176.1	172.18.176.1
051	IPCAMERA	IPC	3519V101_IMX226_W_7.1.39.2	172.18.178.3	255.255.248.0	172.18.176.1	172.18.176.1
021	IPCAMERA	3516D_OV46...	3516D_OV4689_B1T1A1M0C1...	172.18.178.7	255.255.248.0	172.18.176.1	172.18.176.1
033	IPCAMERA	IPC	3516CV300_IMX307_B1T1A1M...	172.18.178.23	255.255.248.0	172.18.176.1	172.18.176.1
030	IPCAMERA	IPC	3516CV300_IMX290_TF_W_8...	172.18.178.29	255.255.248.0	172.18.176.1	172.18.176.1
029	IPCAMERA	IPC	3516CV300_IMX290_MINI_W...	172.18.178.38	255.255.248.0	172.18.176.1	172.18.176.1
005	IPCAMERA	IPC	3516D_OS05A10_B1T1A1M0C...	172.18.178.52	255.255.248.0	172.18.176.1	172.18.176.1
024	IPCAMERA	IPC	3516AV200_IMX326_AF4X_AU...	172.18.178.57	255.255.248.0	172.18.176.1	172.18.176.1
006	IPCAMERA	IPCKjl	3516D_OV4689_W_SD_S_C0...	172.18.178.62	255.255.248.0	172.18.176.1	172.18.176.1
018	IPCAMERA	IPC	3516CV300_IMX290_TF_W_8...	172.18.178.63	255.255.248.0	172.18.176.1	172.18.176.1
027	IPCAMERA	IPC	3516CV300_IMX290_W_8.1.9.3	172.18.178.65	255.255.248.0	172.18.176.1	172.18.176.1

NetWork Param Upgrade

FilePath: 6D\_OV4689\_BASE\_W\_8.1.13.2.FLS.flr

Browse

State

Note

The upgrading process will be 1 to 10 minutes, please don't disconnect power to the device during the process. The device reboots automatically after the upgrade.

SECURITY VERIFY

UserName: admin

Password: [redacted]

Reset

Upgrade

②

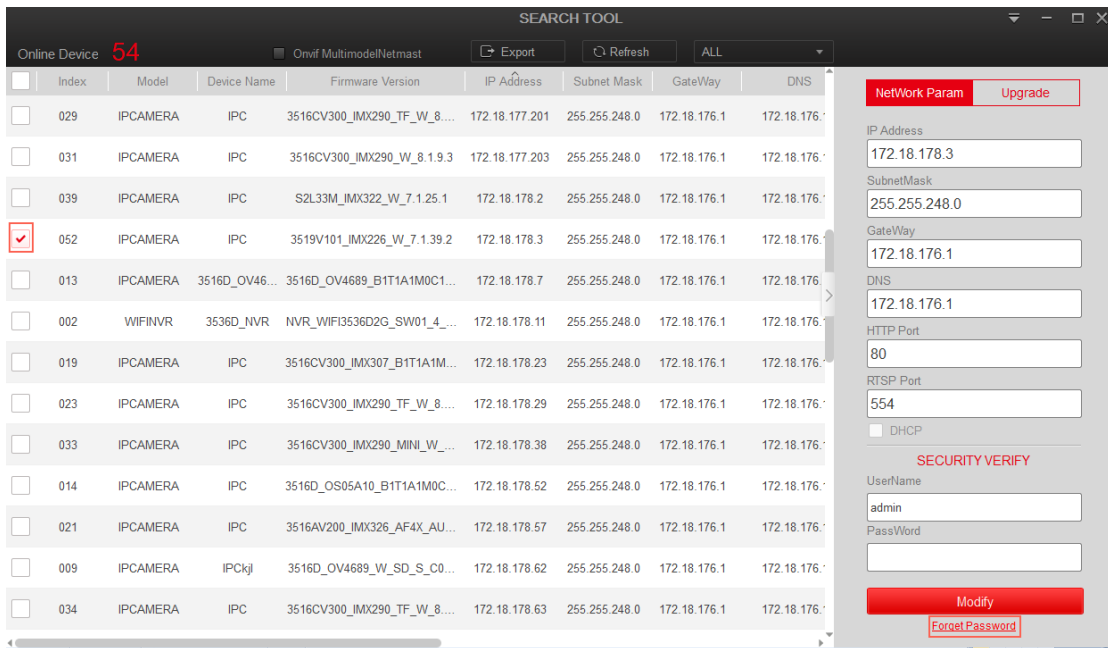


Figure 3-7

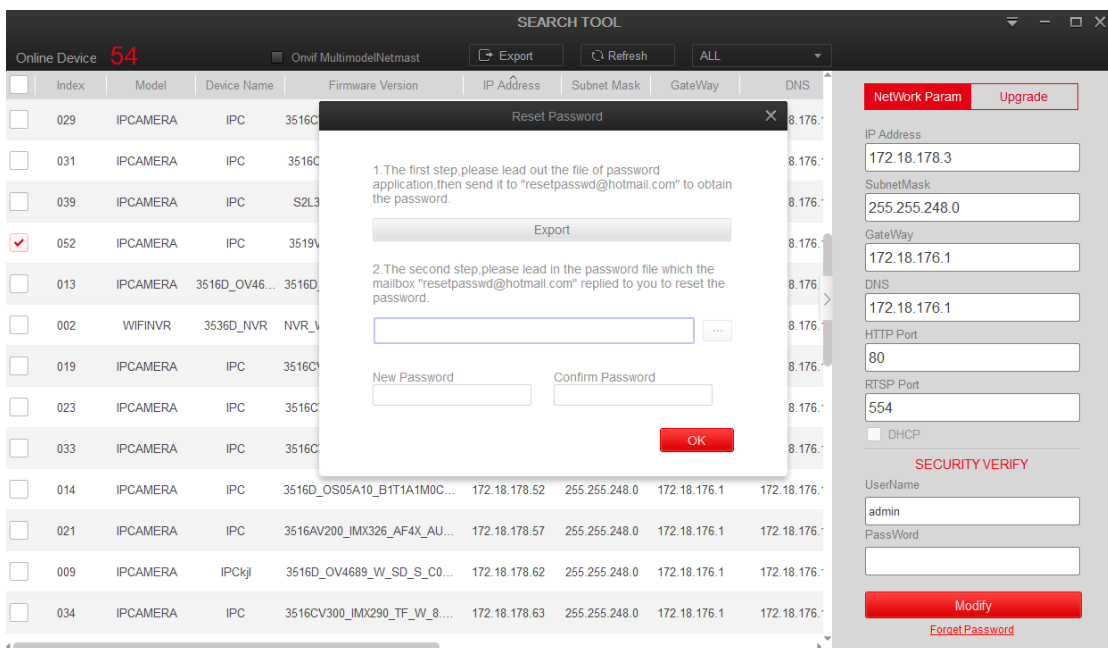
### 3.2.7 Forget password

Forget your password as shown in figure 3-8 below:

- ① Select the device and click the “Forget Password” in the lower right corner of the interface to enter the corresponding interface;
- ② Export the key file first, and then send it to "resetpasswd@hotmail.com", wait for the reply to decrypt the file, and then import the decrypted file, enter the new password and confirm the password to complete the reset password.



①



②

Figure 3-8

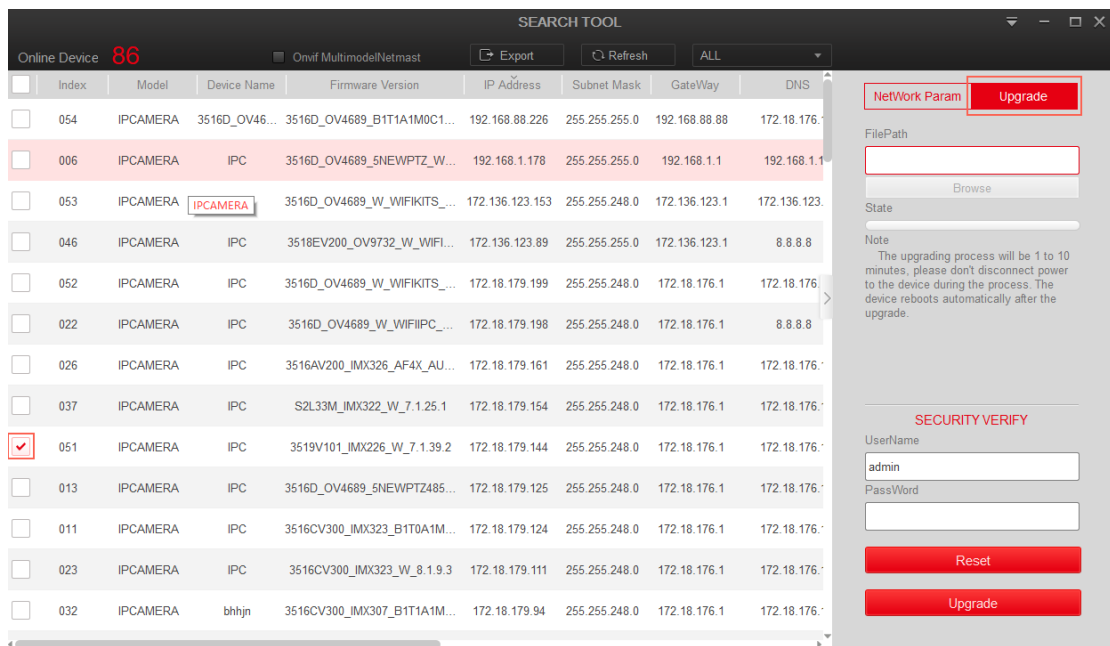
### 3.2.7 Reset IPC

Resetting the IPC belongs to soft recovery and restores all factory settings except IP. Reset the IPC as shown in Figure 3-8 below:

① Select the IPC device, click Upgrade, enter the password, and click Reset;

② After the reset is completed, it indicates that the reset is successful. Click the "Ok" button

or "X" button to close the confirmation list prompt and return to the main interface.



①

---

Selected Device: 1   Failed to modify: 0				
Index	Device Type	IP Address	MAC	Modify
051	IPCAMERA	172.18.179.144	14:1E:11:38:32:89	Reset Success

Ok

②

Figure 3-9